

Tidewater Business Park



4721 Tidewater Avenue • Oakland, CA

Suite	Square Feet	Description
Suite F	±1,488	Warehouse, 1 private office, 1 drive-in door

Lease Rate: To Be Negotiated (no CAM charges)

Business Park Description:

Located on the Westerly side of Interstate 880 (Nimitz Freeway) with access via High Street and/or 66th Avenue exits. Business park is fenced with access via carded electric gate after hours and weekends.

Available Space Description:

- ±432 square feet of office/toilet
- ±16' clear height with no interior columns
- 10'x10' drive-in truck door at the back
- Office entrance at the front
- The entire building has recently been remodeled and painted inside and outside, new awnings
- Oakland Enterprise Zone benefits available
- Free on-site parking
- The Shoreline public park, the Shoreline Trail and the Tidewater Boating Center are all within walking distance

Contact Information:

Norman J. Eggen, SIOR

Cell: (510) 612-8747

Direct: (925) 283-2221

eFax: (224) 828-7189

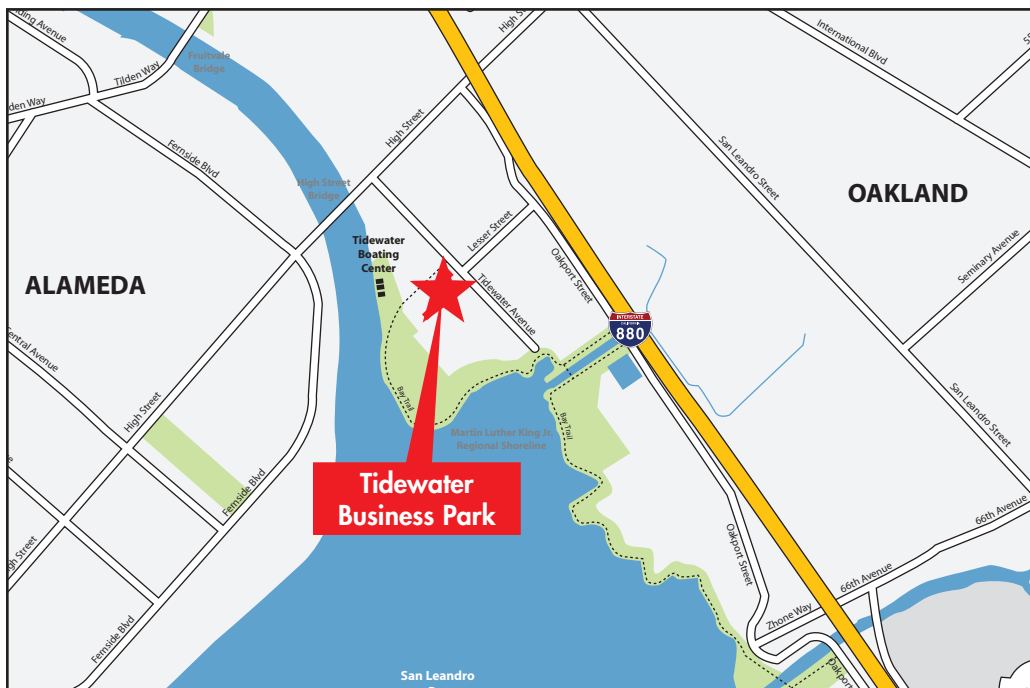
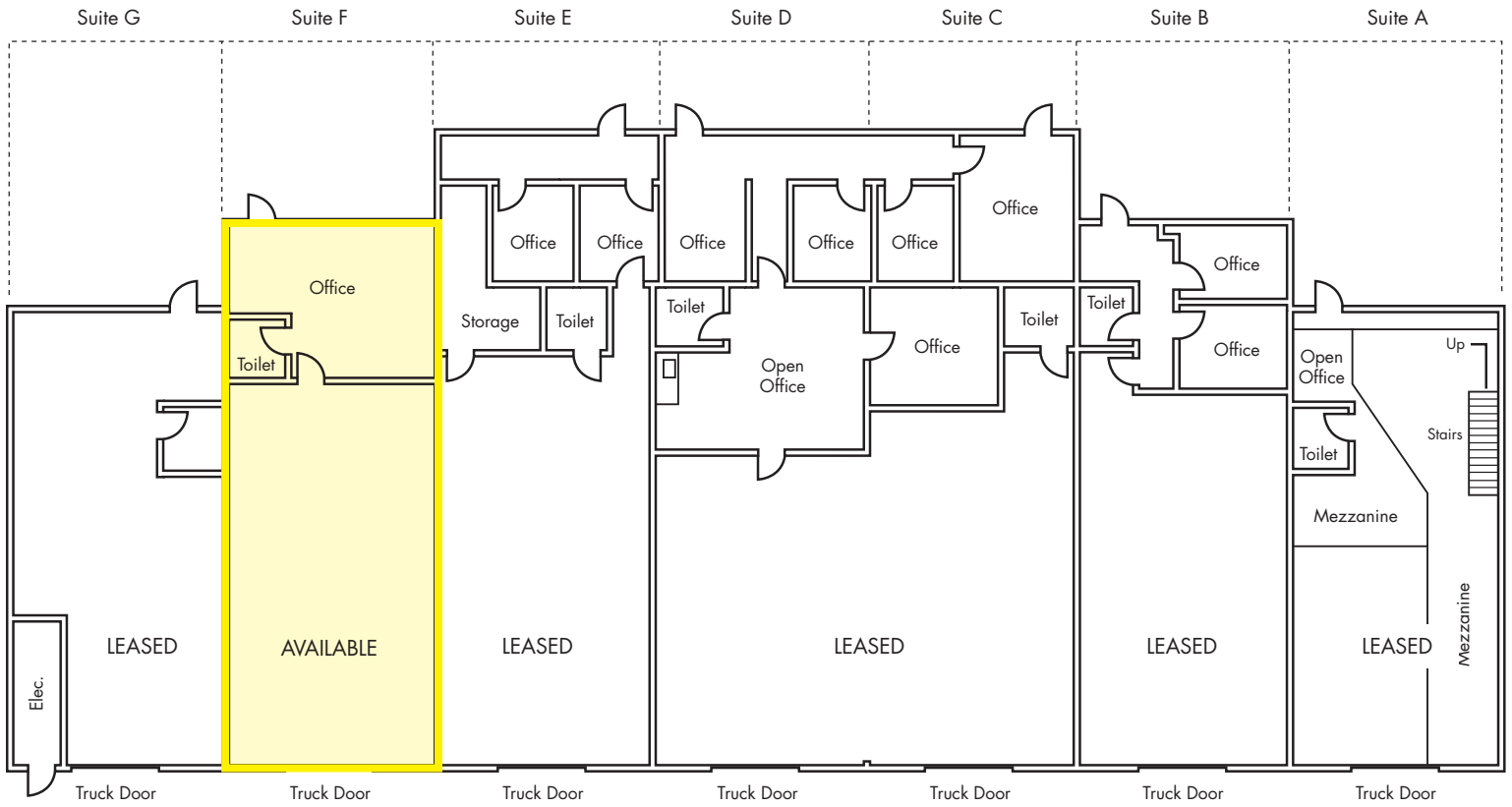
norman.eggen@comcast.net

CA License No. 00473859



Tidewater Business Park

4721 Tidewater Avenue, Suite F • Oakland, CA



Contact Information:

Norman J. Eggen, SIOR

Cell: (510) 612-8747

Direct: (925) 283-2221

eFax: (224) 828-7189

norman.eggen@comcast.net

CA License No. 00473859