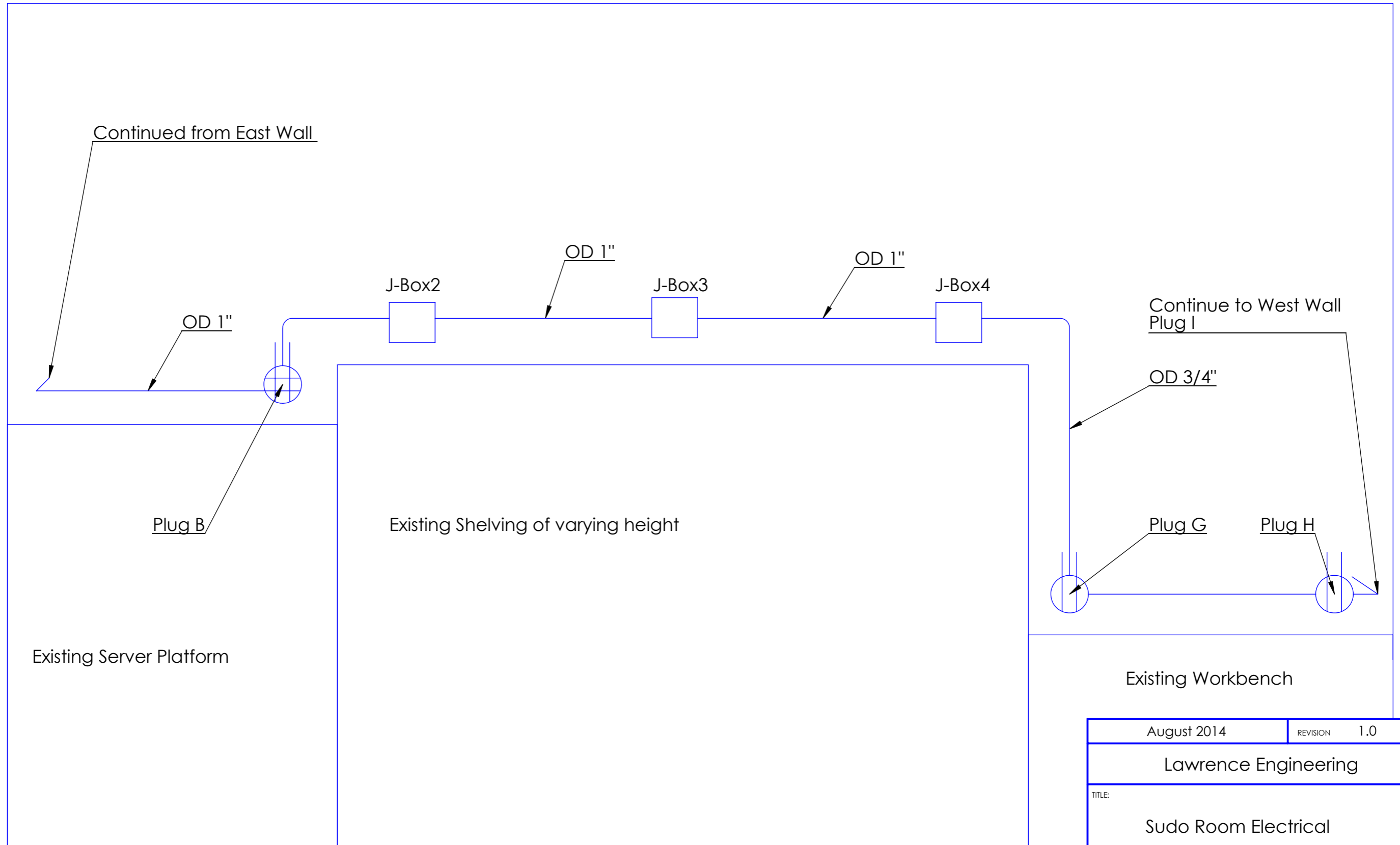


Notes:

- 1. J-box #2-4 are recommended for future installation of power access where shelving elements currently exist.
- 2. J-box #4 is recommended as the box which future 240V service be tied.
- 3. Conduit from J-Box1 to J-Box4 is sized to handle additional wire for future 240V service.



August 2014	REVISION	1.0
Lawrence Engineering		
TITLE: Sudo Room Electrical		
DWG NO. E3-South Wall Conduit Layout		A3
Drawing Not to Scale		SHEET 4 OF 8